

End Cap Configurations

Use the following to identify Parker end cap styles.

REFERENCE GUIDE



AR 020 O-ring with recessed cap



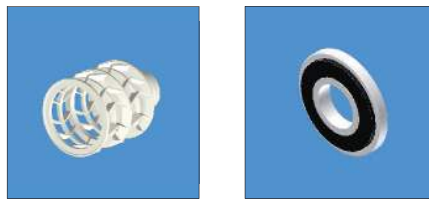
DO Double open end



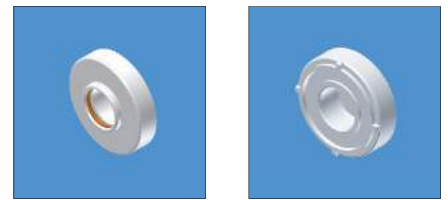
LL 120 O-ring



LR 120 O-ring & closed recessed end



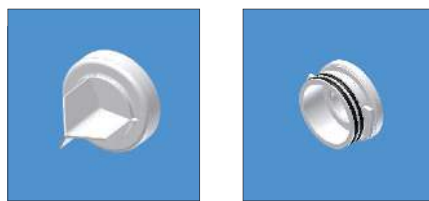
OB Open end with spring



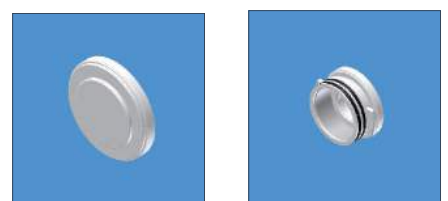
PR 213 O-ring with recessed cap



SC 226 O-ring with closed end



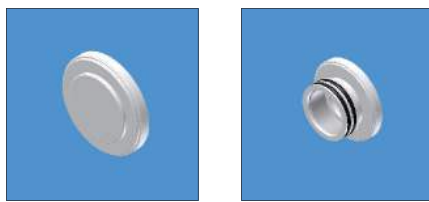
SF 226 O-ring with fin



SSC 226 O-ring w/closed end & SS insert



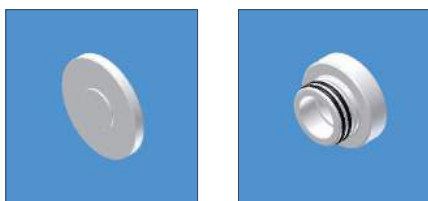
SSF 226 O-ring with fin & SS insert



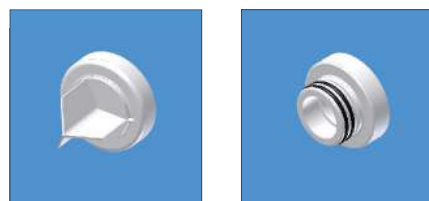
STC 222 O-ring w/closed end & SS insert



STF 222 O-ring with fin & SS insert



TC 222 O-ring with closed end



TF 222 O-ring with fin



TX 222 O-ring with flex fin



XB spring with poly core extender

