

voran[®]

machinery

Basket press 60K 100K



60K RM1,5



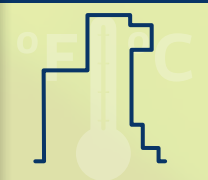


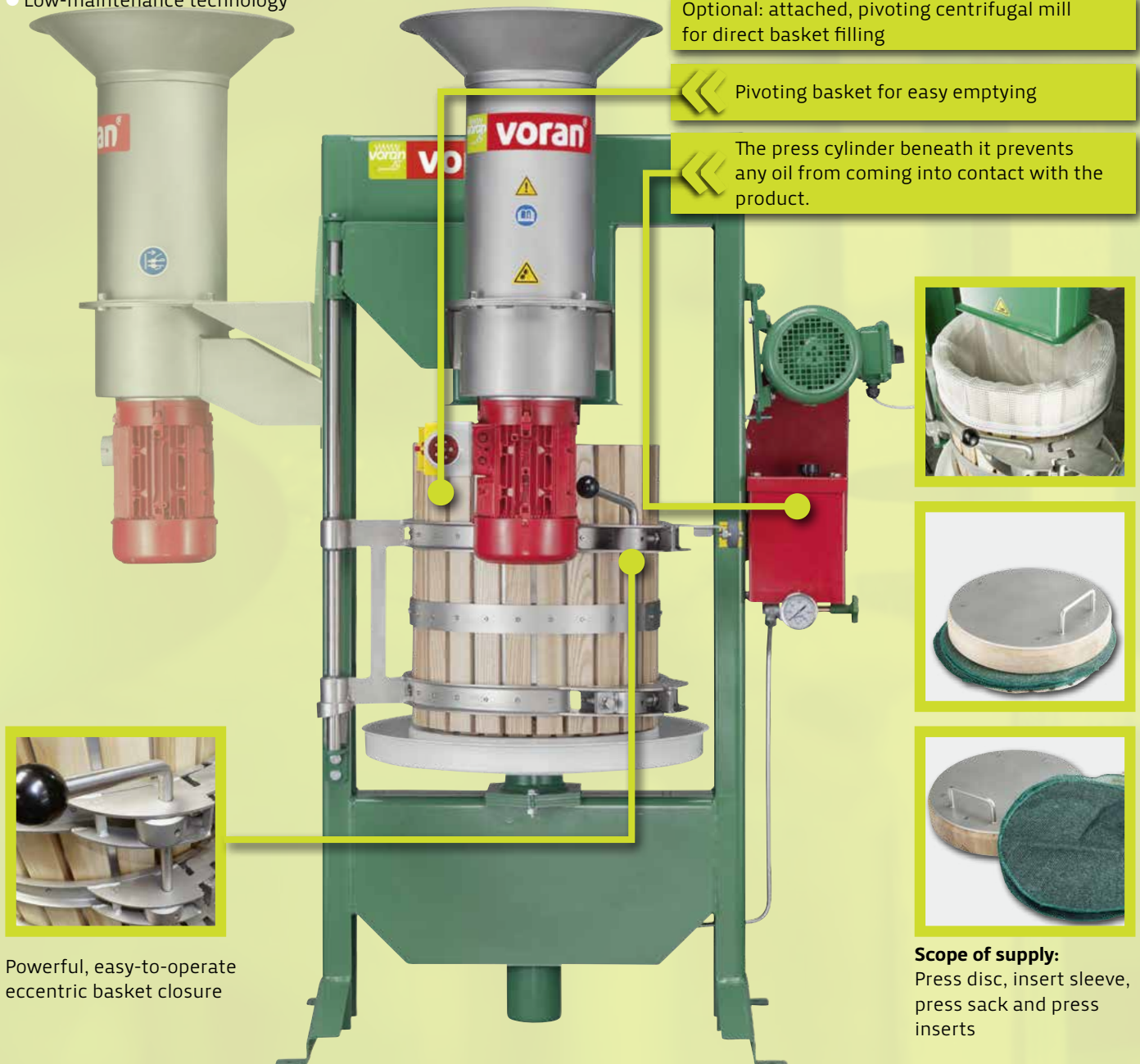
100K

Pressing fruit...

The best from the basket

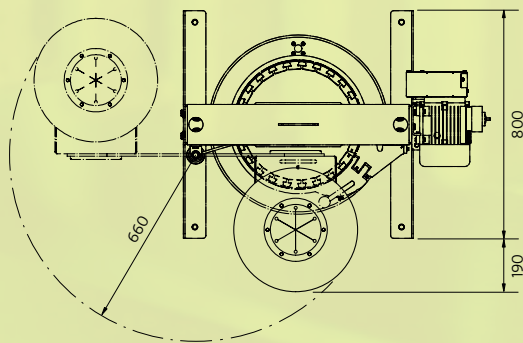
- High yield
- Smooth-running stainless steel eccentric closure for pivoting round basket
- All parts coming into contact with fruit are produced from stainless steel, wood or plastic
- Simple operation
- Easy cleaning
- Maintenance-free hydraulic pump without suction valve or collar
- Automatic 380-bar overpressure valve (for 100K) and 320 bar (for 60K)
- Oil-freed pressing area due hydraulic system located beneath the press
- Low-maintenance technology

| Milling | Pressing | Pasteurising |
|--|---|--|
|  <p>RM series Masher</p> |  <p>60K 100K</p> |  <p>PA series</p> |

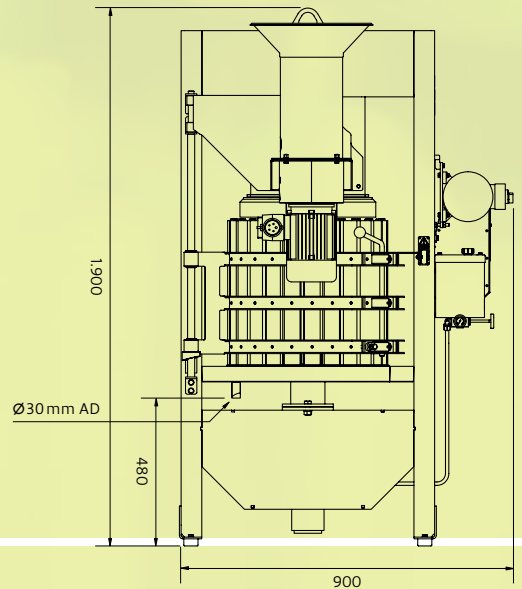
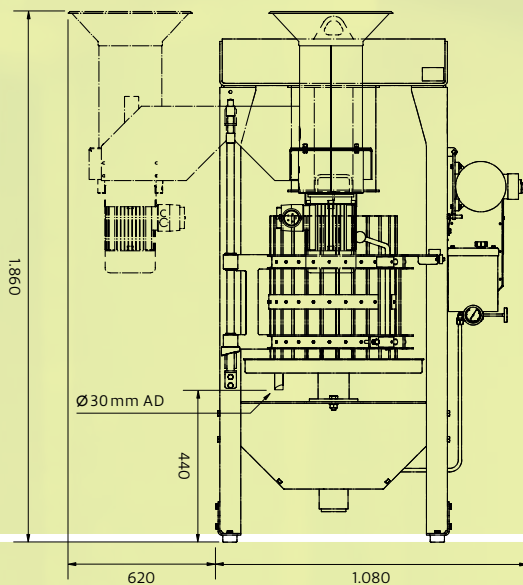
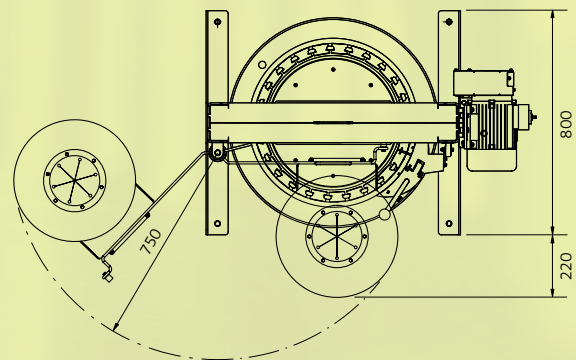


...and processing it further

60K



100K



| Model | 60K (RM1,5) | 100K (RM1,5) |
|--|---|-----------------------------|
| Rated throughput in kg/h | 180 | 300 |
| Motor power in kW (mill) | 1.1 | 1.5 |
| Press force in kN | 150 | 240 |
| Electrical connection* | 400V/50Hz (three-phase) | 400V/50Hz (three-phase) |
| Plug | CEE 16 A | CEE 16 A |
| Length/width/height dimensions in mm (RM1,5) | 800(990)/1,080(1,700)/1,840(1,860) | 800(1,020)/900/1,850(1,900) |
| Weight in kg (mill) | 264(28) | 340(28) |
| Diameter of the inserts in cm | 38 | 46 |
| Number of cloths | 3 | 3 |
| Design | Powder-coated steel | Powder-coated steel |
| Scope of supply (applies for both presses) | 3 press inserts, 3 insert sleeves, press sack, press disc | |

* Other mains voltages and designs on request

voran.at

voran business lines

- machines**
- machine construction**
- plant construction**
- facades**

How to find us



voran Maschinen GmbH
 Sales
 Linzer Strasse 30
 A 4650 Edt bei Lambach
 T +43(0)72 49 / 444-0
 F +43(0)72 49 / 444-888
 office@voran.at
 www.voran.at

Production
 Inn 7
 A 4632 Pichl bei Wels

Service hotline
 Monday - Friday, 7 a.m. - 8 p.m.
 Saturday, 7 a.m. - 6 p.m.
 T +43(0)72 49 / 444-200